

USER GUIDE – FPT SMART CAMPUS SYSTEM (for User Role)

1. Introduction to the FPT Smart Campus System

- The FPT Smart Campus System is an intelligent control platform for the entire campus, developed entirely by the IT Department of FPT University Da Nang.
- It allows staff and lecturers to intelligently control electrical devices on campus (depending on their assigned role and device permissions).
- Staff can fully control electrical devices without needing assistance from others or using the original remote control. Simply connect to the **FPT University Wi-Fi network**, then use a smartphone, tablet, or laptop to control all devices assigned to your account.
- **Phase 1:** Air conditioner control system — currently, all classrooms from the 2nd to the 9th floor of the Alpha building have been equipped with control modules; Gamma building classrooms will be equipped next.
- **Phase 2:** Control of lighting, fans, and power sockets in all classrooms.

2. Requirements for Using the System

- You must have an internal FPT University Da Nang account (staff/lecturer account). This account is used for connecting to the FPT University Wi-Fi network and also for logging into the FPT Smart Campus system (if permission has been granted).
- You must be connected to the **FPT University Wi-Fi network** at the Da Nang campus.
- You must use **Google Chrome** on your laptop or smartphone.
- Additionally, to view and control devices, you must be granted access rights by the IT Department.

3. Accessing the System and Installing the App

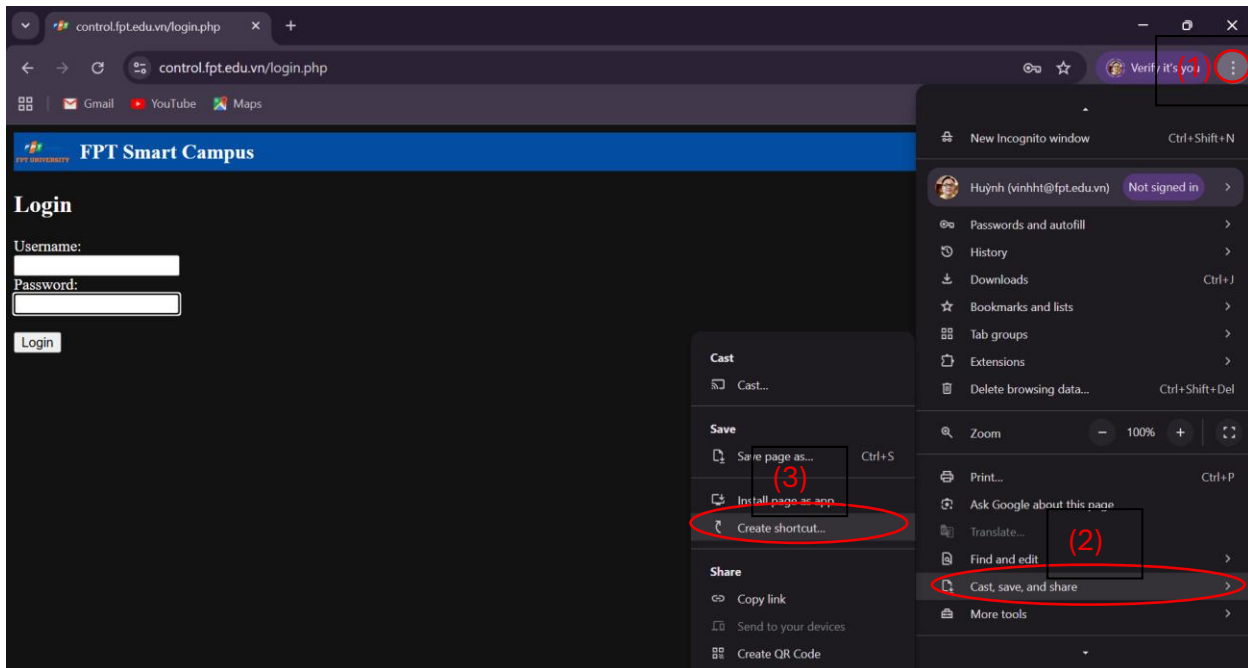
Step 1: Connect to the **FPT University Wi-Fi network** at the Da Nang campus.

(The system is only accessible when connected to this network.)

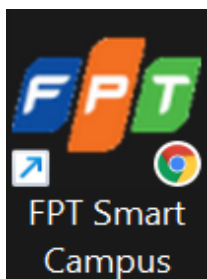
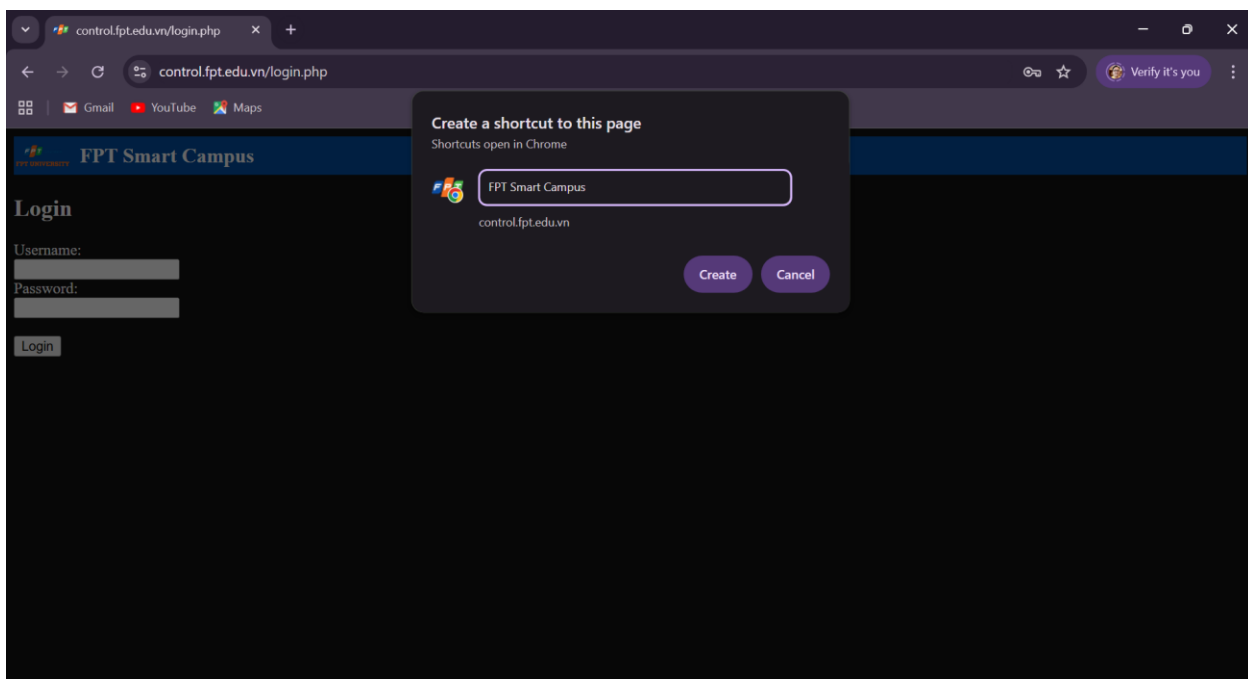
Step 2: Open <https://control.fpt.edu.vn> in Google Chrome.

(This site is internal-only and requires using the campus network's default DNS. If you cannot access the link despite being connected to FPT University Wi-Fi, your computer may be using a custom DNS or connected through a VPN.)

Step 3: In Google Chrome, on the open page <https://control.fpt.edu.vn>, click the buttons **(1)**, **(2)**, **(3)** as shown in the image below.



Step 4: Enter the name **FPT Smart Campus** as shown.



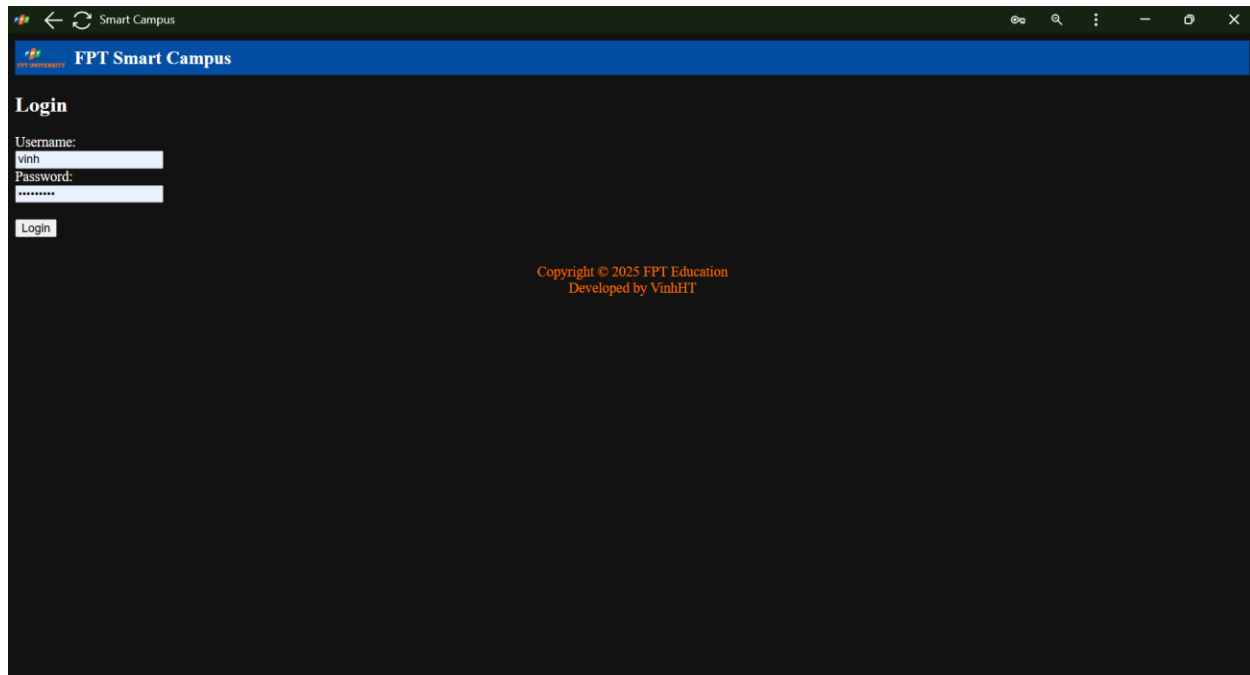
After clicking **Create**, an icon will appear on your desktop like this:

From now on, simply click the **FPT Smart Campus** icon to open the login interface.

Similarly, on smartphones or tablets, you can create a home-screen shortcut for quick access.

4. Login into the System

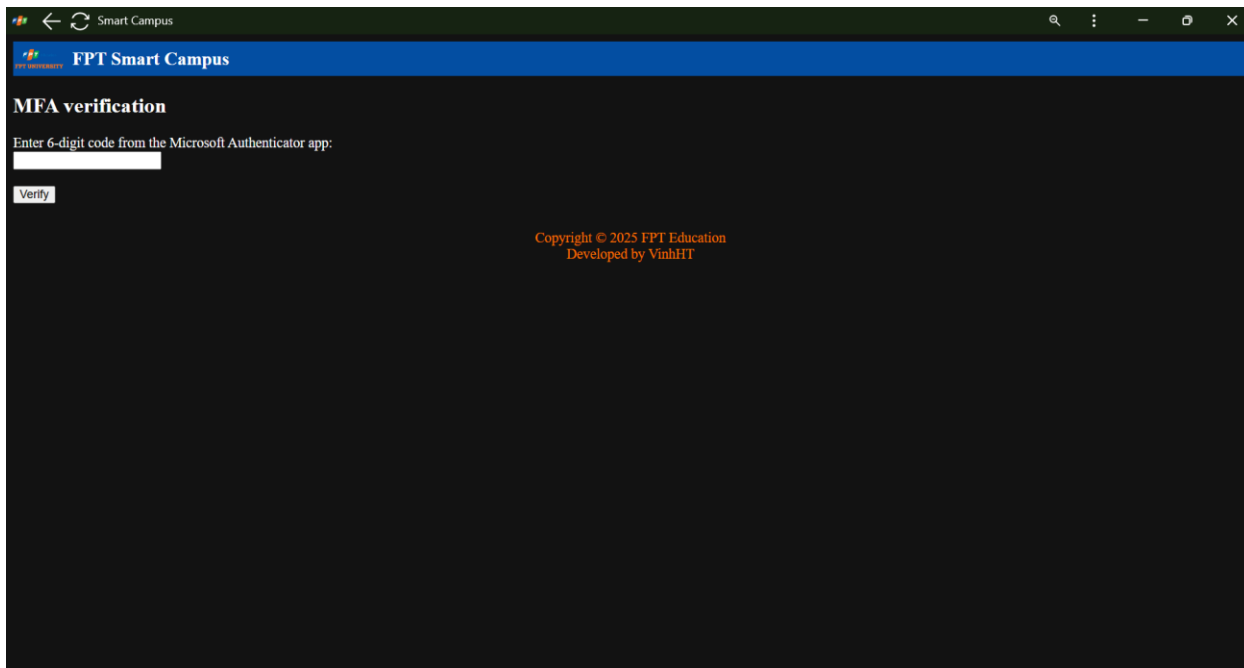
Use your **internal FPTU Da Nang account** (the same one used for FPT University Wi-Fi) to log in. Enter your **username** and **password**, then click **Login**. Depending on your role, one of the two cases will occur:

A screenshot of a web browser window showing the 'FPT Smart Campus' login page. The browser's address bar shows 'Smart Campus'. The page has a blue header with the 'FPT Smart Campus' logo and name. Below the header, the word 'Login' is displayed in bold. There are two input fields: 'Username:' with the text 'vinh' and 'Password:' with masked characters '*****'. A 'Login' button is positioned below the password field. At the bottom center of the page, there is a copyright notice: 'Copyright © 2025 FPT Education' and 'Developed by VinhHT'.

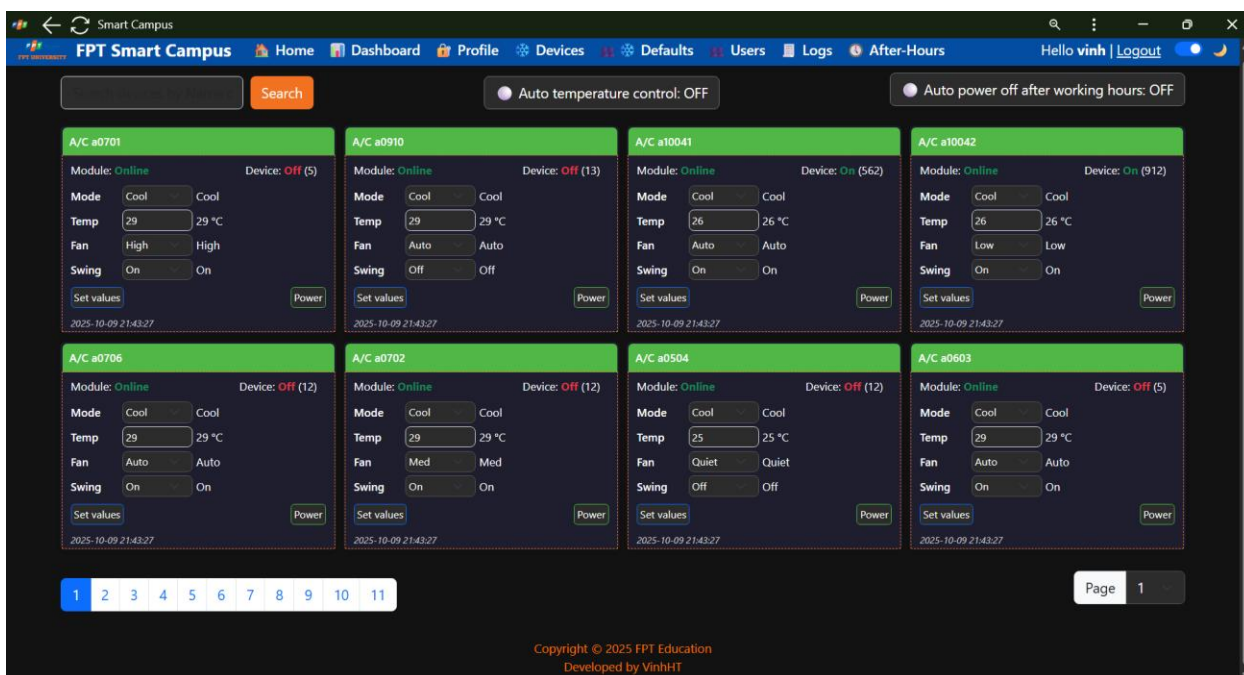
4.1. Case 1 – Admin Role

A **Multi-Factor Authentication (MFA)** window will appear.

Enter the authentication code from the Microsoft Authenticator app linked to your username to complete the second verification step and gain access.



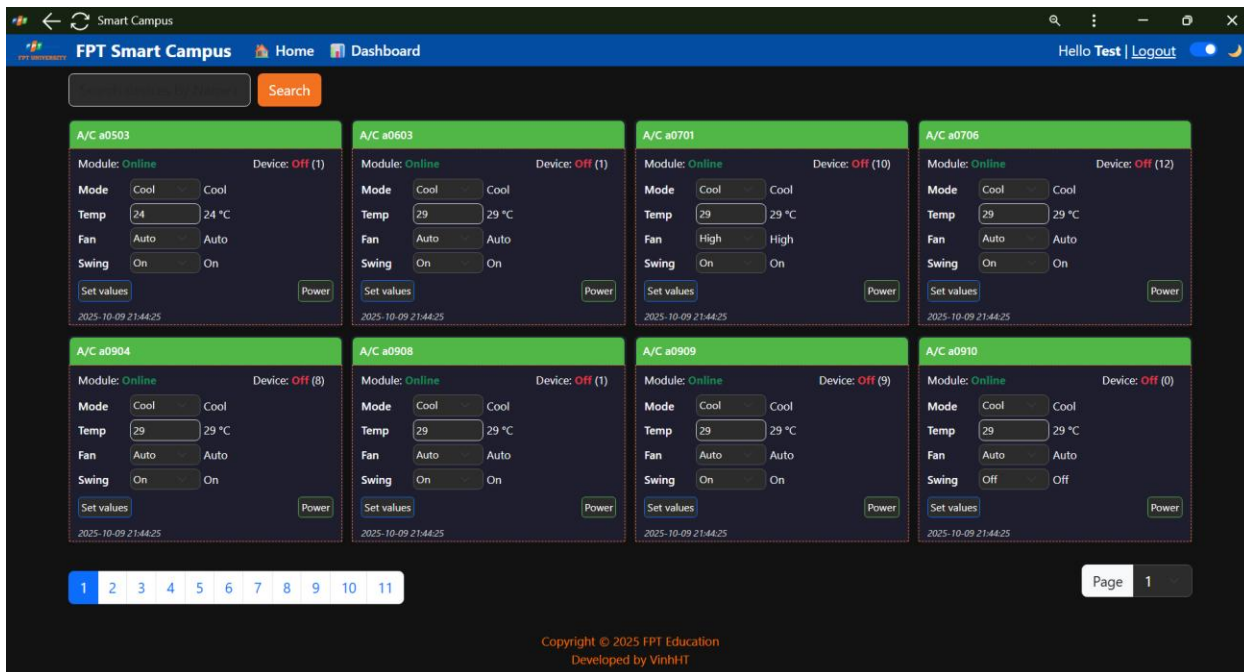
The Admin interface provides **full permissions** and all system features.



4.2. Case 2 – User Role

When logging in, you will be taken directly to the **Home** page without the MFA step.

The User interface contains only the **Home** menu (to control assigned devices) and **Dashboard** (to view system-wide status).



All FPTU Da Nang lecturer accounts (those used for Wi-Fi access) are **pre-assigned the User role** and **have control rights** over all air conditioners installed in classrooms of the **Alpha building** (Gamma building will be added next).

⚠ Note: Please be careful when performing control operations to avoid controlling devices in the wrong classroom.

5. Device Naming Convention

Devices are named in the format <device type><room number>, where:

5.1. Device Type (<device type>):

- **Air conditioner:**
 - “a” for Alpha building
 - “g” for Gamma building
- **Contactor (for lighting, fans, and power sockets):**
 - “ca” for Alpha building
 - “cg” for Gamma building

5.2. Room Number (<room number>):

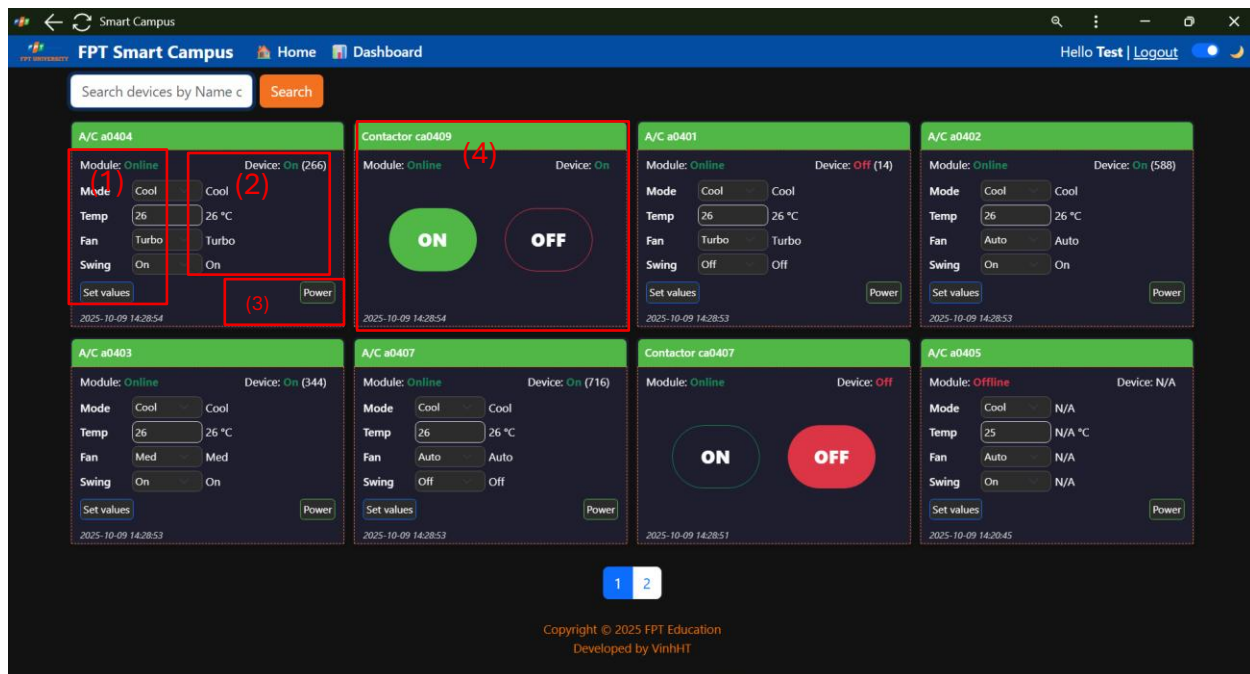
- Includes a leading zero if the room number has fewer than 4 digits.

5.3. Examples:

- **a0205** → Air conditioner in room 205, Alpha building
- **g0218** → Air conditioner in room 218, Gamma building
- **ca0409** → Contactor controlling lighting, fans, and power outlet in room 409, Alpha building

6. Control Interface

⚠ Reminder: Please be careful when performing control operations to avoid controlling devices in other rooms.



6.1. Air Conditioner Control Card (A/C)

Includes three main sections:

(1) Control Panel:

- **Module:** Displays module status (Online/Offline)
- **Mode:** Cooling modes (Cool / Dry / Fan) – click to select
- **Temp:** Set the desired temperature
- **Fan:** Adjust fan speed
- **Swing:** Turn airflow swing On/Off

After adjusting settings, click **Set Values** to send the new configuration to the air conditioner. Check if the actual state updates accordingly.

(2) Status Display:

- **Device:** On/Off (power status)
- **Mode:** Current cooling mode (Cool/Dry/Fan)
- **Temp:** Current temperature (20–29 °C)
- **Fan:** Current fan speed (Auto/High/Med/Quiet/Turbo)
- **Swing:** Current swing mode (On/Off)

(3) Power Button:

Used to turn the air conditioner On/Off.

After pressing **Power**, observe the **Device** status in (2). It may take 2–5 seconds for the air conditioner to respond—avoid repeatedly pressing Power to prevent rapid on/off cycling.

6.2. Contactor Control Card (Room Power)

Simpler interface, consisting of:

- **Module:** Shows module status (Online/Offline)
- **Device:** Displays room power state (On/Off)

Buttons:

- **On:** Turns on power (green background when active)
- **Off:** Turns off power (red background when inactive)

This device controls the **main power** for lighting, fans, and power outlet in the classroom.

7. Search and Filter Function

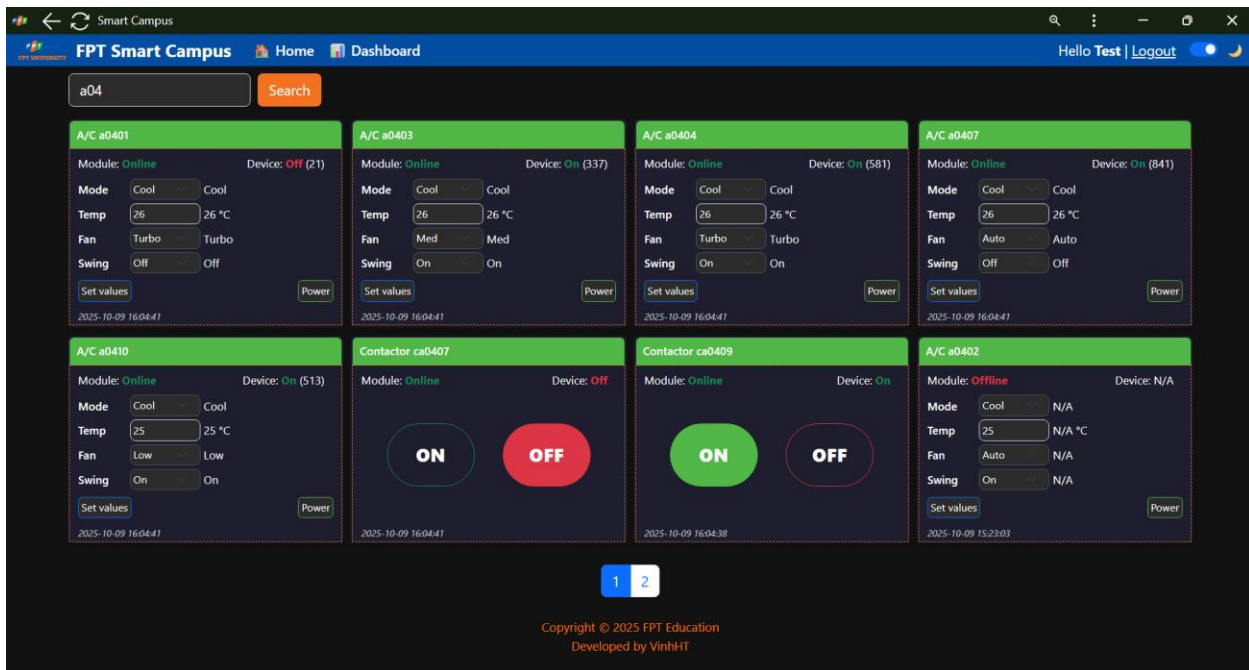
For quick access, you can search for a specific device or room.

Step 1: Enter the search keyword in the search box.

Step 2: Click the **Search** button to filter results.

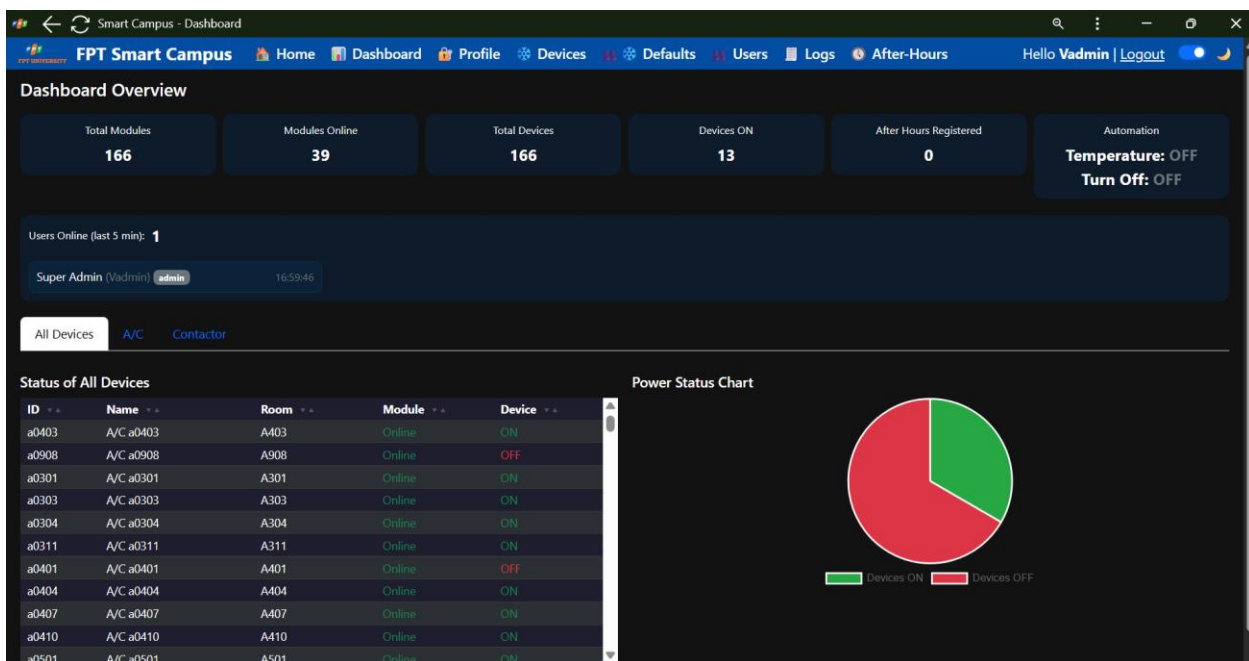
Examples:

- To find the air conditioner in **room 208, Alpha building**, enter a0208 and click **Search**.
- To list all devices on **4th floor, Alpha building**, enter a04 and click **Search**.



8. Dashboard

Displays overall system statistics and device statuses in real time.



9. System Log

The system records all user operations and device state changes, including when devices are controlled by their **original remotes**. Only users with the **Admin** role have access to these logs.

IT Department – FPT University Da Nang

October 2025

For internal circulation only – FPT University Da Nang